



XMLRegister - XML Syntax Reference Guide

XML Register - XML Syntax Reference Guide

Document Number: 200014.en_US-201208

© 2012 PayPal, Inc. All rights reserved. PayPal is a registered trademark of PayPal, Inc. The PayPal logo is a trademark of PayPal, Inc. Other trademarks and brands are the property of their respective owners.

The information in this document belongs to PayPal, Inc. It may not be used, reproduced or disclosed without the written approval of PayPal, Inc.

Copyright © PayPal. All rights reserved. PayPal (Europe) S.à r.l. et Cie., S.C.A., Société en Commandite par Actions. Registered office: 22-24 Boulevard Royal, L-2449, Luxembourg, R.C.S. Luxembourg B 118 349.

Consumer advisory: The PayPal™ payment service is regarded as a stored value facility under Singapore law. As such, it does not require the approval of the Monetary Authority of Singapore. You are advised to read the terms and conditions carefully.

Notice of non-liability:

PayPal, Inc. is providing the information in this document to you "AS-IS" with all faults. PayPal, Inc. makes no warranties of any kind (whether express, implied or statutory) with respect to the information contained herein. PayPal, Inc. assumes no liability for damages (whether direct or indirect), caused by errors or omissions, or resulting from the use of this document or the information contained in this document or resulting from the application or use of the product or service described herein. PayPal, Inc. reserves the right to make changes to any information herein without further notice.



Contents

Audience	5
Organization	5
Where To Go For More Information	5
Revision History	6
Chapter 1 Introduction	7
How PayPal XMLRegister Works	7
Usage Scenarios	8
Scenario 1: Registering or Updating Merchants	8
Scenario 2: Deactivating a Merchant Registration	8
Scenario 3: Reactivating a Deactivated Merchant Registration	9
Chapter 2 PayPal XMLRegister Syntax	11
XML Syntax Notation	11
PaymentServicesMerchantRequest Document	12
Registration	13
Merchant	14
Processors	15
SupportedTenders	18
Acquirer	19
Products	20
Users	21
Contacts	22
ExtendedEntries	23
Address	23
RequestAuth	23
PaymentServicesMerchantResponse Document	24
RegistrationResult	25
Chapter 3 PayPal XMLRegister Example Documents.	27
Creating a New Merchant Account	27
Updating Merchant Status	30

Appendix A Registration Result Codes33
Appendix B Required Processor Data Examples35
American Express APAC (AMXA)	35
American Express Phoenix (AMEX)	36
Elavon (formerly NOVA)	37
First Data Merchant Services Nashville (NASH).	38
First Data Merchant Services North (NORT).	39
First Data Merchant Services South (SOUT)	40
First Data TeleCheck (TELN)	41
Global Payment Central (MAPP).	41
Global Payments East (NDCE)	42
Heartland Payment Systems (HTLD)	43
Litle (LITL)	44
Merchant e-Solutions (MESP)	44
Moneris (MONE)	46
Paymentech Salem (New Hampshire) (PAYT).	47
Paymentech Tampa (TMPA)	48
PayPal Australia (FDRA).	48
SecureNet (SNET)	49
TSYS Acquiring Solutions (formerly Vital) (VITA)	50
Vantiv (formerly Fifth Third Processing Solutions) (FIFT)	52
WorldPay (WPAY)	52



Preface

This guide describes XMLRegistration syntax, syntax examples, and syntax support information.

Audience

This guide is for resellers or partners who are working with a PayPal partner or PayPal when they are working directly with merchants.

Organization

This guide contains the following chapters and appendixes:

- [Chapter 1, “Introduction,”](#) introduces XMLRegistration and describes how it works.
- [Chapter 2, “PayPal XMLRegister Syntax,”](#) lists the syntax used for XML merchant operations.
- [Chapter 3, “PayPal XMLRegister Example Documents,”](#) lists examples of syntax use for merchant requests and responses.
- [Appendix A, “Registration Result Codes,”](#) lists the registration result code numbers and their explanations.
- [Appendix B, “Required Processor Data Examples,”](#) lists examples of the request data that must be included for each supported processor.

Where To Go For More Information

The following resources provide information that supports the information found in this guide.

- For a specification enabling merchants to submit payments to a payment processor through XML, see *Payflow Pro XMLPay Developer’s Guide* on x.com.
- For more information on XML digital signature syntax., see: <http://www.w3.org/TR/xmlsig-core>
- For frequently asked questions about XML, see: <http://www.xml.org>

Revision History

TABLE P.1 Revision History

Date	Description
08/22/2012	Updated processor information and examples.
09/13/2010	Updated processor information.

1

Introduction

PayPal XMLRegister allows you to register and manage PayPal merchants using an XML interface.

Using this syntax, you can accomplish the following:

- Register a merchant onto PayPal's systems instead of manually entering each merchant registration in the Partner Manager.
- Update merchant information contained on PayPal's systems.
- Deactivate a merchant so transactions will no longer be accepted by PayPal.
- Re-activate a previously deactivated merchant so PayPal will accept the merchants.
- Send multiple requests at once from within a single XMLRegister document.

How PayPal XMLRegister Works

PayPal XMLRegister uses documents to create a merchant registration request and dispatch it to an associated PayPal XMLRegister compliant server component. Responses are formatted in XML, and return the results of registration requests to the merchant.

With PayPal XMLRegister, documents containing authentication information are submitted to a secure registration server that can authenticate the source and integrity.

Requestors submit merchant registrations by sending one or more XMLRegister requests to a registration server over an HTTP connection. The registration server processes the requests and sends an XMLRegister response to the requesting party. You can choose to build a browser-based application to accept user input for the registration.

Each request includes a field that specifies whether the registration is for a new merchant account or an update of an existing account.

NOTE: Business rules and the information needed to complete a registration vary among processors and acquirers. XMLRegister does not attempt to enforce business rules related to a registration, but it does transport to a registration server, which can enforce business rules and report non-compliance through an appropriate XMLRegister response.

To accommodate changing registration needs for payment processors and acquirers, XMLRegister contains mechanisms for passing extended data fields in name-value pairs. Adding information in extended data fields does not impact previously supported parties.

Should the requestor find any problems with a merchant account request, they are responsible for making fixes and resubmitting the registration request.

NOTE: Data in Partner Manager reflects changes made in XMLRegister.

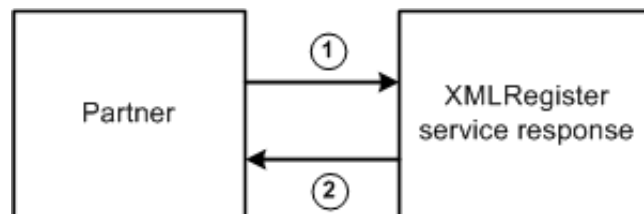
Usage Scenarios

Typically you will register and update merchants and deactivate and reactivate them as described in the following scenarios.

Scenario 1: Registering or Updating Merchants

In this scenario, you send one or more merchant registrations or updates in XMLRegister format.

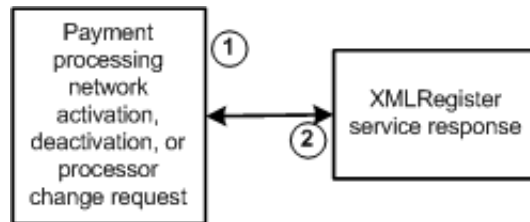
FIGURE 1.1 Merchant registration and update



1. The partner sends an XMLRegister request containing information on one or more merchant accounts to be created or updated. Note that registrations and updates can be sent singly or in a batch of as many as 32 requests.
2. The XMLRegister service authenticates the submitter of the request and verifies the validity of the syntax and content of the request. For each merchant in the XMLRegister request, the service can add or update merchant accounts as appropriate. Information confirming the success or failure of processing is collected as each merchant is processed.
3. Once all information in the XMLRegister request has been processed, an XMLRegister response is constructed and returned. The response contains information on the overall success or failure of the request, as well as information on the success or failure of processing each merchant in the request. The transaction may be performed in a synchronous or asynchronous manner.

Scenario 2: Deactivating a Merchant Registration

In this scenario, the users employ XML to activate, deactivate, or change processor information for their merchants either permanently or temporarily.

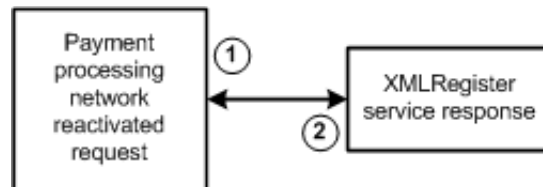
FIGURE 1.2 Deactivating a merchant registration

1. A partner sends an XML message to PayPal to deactivate a merchant.
2. PayPal returns an XML response to confirm that deactivation has been completed.

Once a merchant has been deactivated, transactions from this merchant account will be rejected.

Scenario 3: Reactivating a Deactivated Merchant Registration

In this scenario, you use XML to reactivate a deactivated merchant.

FIGURE 1.3 Reactivating a merchant registration

1. A partner on the payment processing network sends XML message to PayPal to reactivate a merchant.
2. PayPal returns XML response to confirm that reactivation has been completed.

Once a merchant has been reactivated, transactions from this merchant account will be accepted.

NOTE: The response from XMLRegister will indicate if your request was successful or not.

2

PayPal XMLRegister Syntax

This chapter describes the PayPal XMLRegister syntax used for requesting new merchant registration or updating an existing merchant. Using this syntax you can do the following:

- Register a new merchant
- Update an existing merchant
- Deactivate a merchant
- Reactivate a merchant

PayPal XMLRegister documents can be submitted to register a new merchant or update an existing merchant. To process registration requests in a batch, each document can contain as many as 32 requests.

For clarity, the element syntax definitions in this chapter assume that a new merchant is being created. Note that for merchant information updates, element definitions of mandatory elements are optional.

XML Syntax Notation

The following example presents the notation used to express PayPal XMLRegister syntax in this chapter:

```
<Example>
  (element)
  (optionalElement)?
  (alternativeElement1|alternativeElement2)
  (element)+
  (element)*
</Example>
```

TABLE 2.1 *Syntax notation*

element	Indicates the occurrence of a (possibly complex) XML element (for example, <element>...</element>) defined elsewhere.
?	Indicates an optional element.
 	Separates alternative elements, any one of which is allowed.
+	Indicates that one or more occurrences of an element are allowed.
*	Indicates that zero or more occurrences of an element are allowed.

PaymentServicesMerchantRequest Document

The PaymentServicesMerchantRequest document is a merchant registration or registration update request that is sent to a registration server.

NOTE: A single request may include instructions to process multiple registrations in a batch. You can have as many as 32 registrations in a batch.

The following syntax is used in this document:

```
<PaymentServicesMerchantRequest Timeout=? Version=?>
  <RequestData>
    (Reseller)
    <Registrations>
      (Registration)+
    </Registrations>
  </RequestData>
  (RequestAuth)?
</PaymentServicesMerchantRequest>
```

TABLE 2.2 *PaymentServicesMerchantRequest elements*

Element	Description
Reseller	This element identifies the reseller that is submitting the registration request within the target payment processing network. Note that the reseller may be different from the submitting party in a delegated processing model.
Registration	This element contains all information necessary to register a new merchant or update registration information for an existing merchant. It also includes a list of merchant users with role-restricted access privileges.
RequestAuth	This optional element provides authentication of the requestor through a user name and password using UserPass. (For more information on UserPass, refer to “UserPass” on page 23.)
Timeout	This element is an optional element that puts an upper limit on the time that the server will spend processing the request. Multiple registrations submitted within a single request document execute independently of one another. Results will be returned for any registrations in a request that complete before the upper limit is reached.

Registration

The Registration syntax contains all information necessary to register a new merchant or update registration information for an existing merchant. It also includes a list of merchant users with their role-restricted access privileges.

```
<Registration Id=? Type=(New | UpdateProcessor | UpdateAcquirerStatus |
UpdateMerchantStatus | UpdateContactInfo) >
  (Merchant)
  (Processors)
  (Products)?
  (Users)?
</Registration>
```

TABLE 2.3 Registration elements

Element	Description
Id	<p>This is an optional element of a registration that can be used to track the registration on the payment processing network.</p> <p>The submitting reseller generates this registration identifier, which should be unique for all registrations submitted by that reseller.</p> <p>NOTE: The Id does not need not be globally unique across resellers because the payment-processing network will interpret it within the context of the reseller associated with the registration. If an Id element is provided in a registration, it will be included in the matching RegistrationResult in the resulting XMLRegistrationResponse.</p>
Type	<p>This is a required element of a Registration used to indicate whether this is a request to enroll a new merchant or to update an existing merchant. During an update, the merchant's login id from the MerchantInfo element will be used to access existing information in the database.</p> <p>NOTE: You cannot create a MerchantId if it already exists in the database.</p> <p>Type has the following values:</p> <ul style="list-style-type: none"> • New. Registers a new merchant. • UpdateProcessor. Updates processor-specific information for a merchant that is already registered. • UpdateAcquirerStatus. Updates existing acquirer information. This Type value refers to the Acquirer syntax Status element defined in “Acquirer” on page 19. • UpdateMerchantStatus. Updates existing merchant status information. This Type value refers to the Merchant syntax Status element defined in “Merchant” on page 14. You can change other information at the time you send this message, but the purpose of it is to move the status of the merchant from one state to the other. • UpdateContactInfo. Updates existing merchant contact information. It does not change status.
Products	This optional element defines the products the merchant has on the payment processing network.
Users	This optional element defines the merchant's users.

Merchant

The Merchant syntax conveys the account information for a merchant who is either registering for the first time or modifying existing registration information. The following syntax is used for this element.

```
<Merchant>
  (ResellerRefId)
  (MerchantId | VendorId
  (Password)
  (Company)
  (Status)
  (AcceptedTermsOfUse Type=? Revision=?)+
  (ExtendedEntries)?
</Merchant>
```

TABLE 2.4 Merchant elements

Element	Description
ResellerRefId	This element is an unique identifier within each reseller namespace. The element is specified by the reseller and used to identify the merchants that are registered by a particular reseller. To make sure the request is submitted successfully, leading or trailing characters such spaces, tabs, and extra lines are automatically removed when the request is passed.
MerchantId	<ul style="list-style-type: none"> • New registrations: The MerchantId must be unique. • Registration updates: The MerchantId is used to access the merchant's registration record for updating. The VendorId specifies the merchant's unique number to the payment network. <p>Every merchant in the system is associated with a default user whose user name matches MerchantId.</p> <p>To make sure the request is submitted successfully, leading or trailing characters such spaces, tabs, and extra lines are automatically removed when the request is passed.</p>
Password	<p>This element specifies the password to be used by the default user to manage their account and make payment transactions.</p> <p>There are four values used to authenticate a merchant when using the system - partner, merchant login, user login, password. Users login can default to be the same as merchant login, if not presented.</p> <p>To make sure the request is submitted successfully, leading or trailing characters such spaces, tabs, and extra lines are automatically removed when the request is passed.</p>
Company	This element specifies the company name.

TABLE 2.4 *Merchant elements* (Continued)

Element	Description
Status	The Status field indicates the status of the merchant within the processing network. It can change the merchant to Test, Live, and so on, on a global level. Example Status field values include: <ul style="list-style-type: none"> • Deactivated. The merchant's account has been deactivated and can no longer process payments. • Test. The merchant has a test account which cannot be used to process live payments. • Live. The merchant has a live account which allows payment processing.
Accepted TermsOfUse	The element is set to TRUE if the merchant has accepted the terms of use document for the payment network.
Extended Entries	This optional element can be used for the merchant to enter any type of information that might be relevant to processing the merchant's payments.

Company

The Company syntax contains detailed information about the merchant including a list of contacts within the merchant's organization.

```
<Company>
  (Name)
  (Address)
  (URL)
  (Contacts)
</Company>
```

TABLE 2.5 *Company elements*

Element	Description
Name	The company name.
Address	The company address.
URL	The location of the company's Web site.
Contacts	Individuals within the company who can be contacted about the company's account.

Processors

The Processors syntax lists the merchant's payment processor account information.

```
<Processors>
  (Processor) +
</Processors>
```

Processor

The Processor section of the Processors element contains the information needed to configure a merchant from a specific payment processor. [Table 2.6](#) is a list of processor types and their associated IDs. Refer to [Appendix B, “Required Processor Data Examples,”](#) for examples that show required data for each processor.

TABLE 2.6 Supported Processors

Processor Name	Processor ID
This element specifies the name of the processor. XMLRegister supports the following processors and their associated IDs and tender types:	ID associated with the processor name
American Express Phoenix	AMEX
American Express APAC	AMXA
Elavon (formerly Nova)	NOVA
First Data Merchant Services Nashville	NASH
First Data Merchant Services North	NORT
First Data Merchant Services South	SOUT
First Data TeleCheck	TELN
Global Payments East	NDCE
Global Payment Central	MAPP
Heartland Payment Systems	HTLD
Litle	LITL
Merchant e-Solutions	MESP
Moneris	MONE
Paymentech Salem (New Hampshire)	PAYT
Paymentech Tampa	TPMA
PayPal Australia (previously known as First Data International)	FDRA
SecureNet	SNET
TSYS Acquiring Solutions (formerly Vital)	VITA
Vantiv (formerly Fifth Third Processing Solutions)	FIFT
World Pay	WPAY

Payment networks can choose the processors they want to support. For example, an implementation by a US payment network may choose to provide definitions of the First Data Merchant Services Nashville (NASH) payment processor and the American Express (AMEX)

payment processor. Each of these processors requires different types of information for registration.

```
<Processor Status=?>
  (Name)
  (MerchantId)
  (TerminalId)?
  (Acquirer)
  (SupportedTenders)+
  (CurrencyCode)
  (Settlement)?
  (TransactionChecks)?
  (ExtendedEntries)?
</Processor>
```

NOTE: For the American Express (AMEX) and American Express APAC (AMXA) processors, the terminal ID field name changes to `AmexTerminalId`. The field is required, not optional for these processors.

TABLE 2.7 Processor elements

Element	Description
Status	This element gives the status of the processor connection for this merchant (test or live). It changes the status of just the specified processor.
Name	This element gives the name of this processor.
MerchantId	This element gives the Id the processor uses to identify a specific merchant account.
TerminalId	Terminal ID of merchant account.
Acquirer	This element gives information on the banking institution the processor should use to process a merchant payment.
Currency Code	This element specifies the ISO currency code (listed in ISO standard #4217) to use for processing transactions. To update this element, contact PayPal Customer Support at http://www.paypal.com/mts .
Settlement	This element describes how a processor is to perform settlement activities for a given merchant account. This element cannot be updated.
Transaction Checks	This element specifies how transactions will be validated.
Supported Tenders	This element specifies the credit cards that are supported by this processor for this merchant.
Extended Entries	This optional element can be used for the merchant to enter any type of information that might be relevant to processing the merchant's payments.

Settlement

The Settlement syntax specifies how often a processor will perform payment settlement activities for a given merchant account.

```
<Settlement>
  (Mode)
  (Hour)
  (Minute)
</Settlement>
```

TransactionChecks

The TransactionChecks syntax specifies items that should be checked for each transaction.

```
<TransactionChecks>
  (AVSCheckAddress)
  (AVSCheckZip)
  (CSCCheck)
  (ExtendedEntries)?
</TransactionChecks>
```

TABLE 2.8 *TransactionChecks elements*

Element	Description
AvsCheckAddress	This element checks to see that the billing address supplied with the transaction matches the billing address for the submitted tender.
AvsCheckZip	This element checks to see that the zip code supplied with the transaction matches the zip code for the submitted tender.
CSCCheck	This element checks to see that the card security code supplied with the transaction matches the code for the submitted tender.

SupportedTenders

The SupportedTenders syntax lists the tender types supported for each processor and the conditions under which they are supported.

```
<SupportedTenders>
  (SupportedTender) +
</SupportedTenders>
```

SupportedTender

```
<SupportedTender>
  (Processor)
  (TenderType)
  (TenderVariety)?
  (TransactionType)?
  (ExtendedEntries)?
</ProcessorConnection>
```

TABLE 2.9 SupportedTender elements

Element	Description
TenderType	PayPal XMLRegister currently supports credit cards only as the tender type for all processors.
TenderVariety	For all processors, XMLRegister currently supports credit cards only as the tender type, and the following brands of credit cards. <ul style="list-style-type: none"> • American Express • Diner's Club • Discover • Internet Check • JCB • MasterCard • PayPal • Visa
Transaction Type	This optional element specifies which transaction types will be routed to the processor. Currently, only Any and None (representing all or no transaction types, respectively) are supported.
Extended Entries	This optional element accommodates extended entries in a name-value pair list. These entries can be provided to enhance routing mechanisms.

Acquirer

The Acquirer syntax provides bank account and contact information for a bank the merchant has registered with for payment processing.

```
<Acquirer>
  (Name)
  (Phone)
  (Account)
  (Status)?
  (Contacts)
</Acquirer>
```

The Acquirer syntax includes the Account element, which represents the merchant's account number.

TABLE 2.10 Acquirer elements

Element	Description
Account	This element represents the merchant's account number with the acquirer.

TABLE 2.10 Acquirer elements (Continued)

Element	Description
Status	<p>This element represents the merchant's status with that acquirer. It reflects the status of the merchant's application with a merchant account acquirer.</p> <p>Status has the following values:</p> <ul style="list-style-type: none"> • Incomplete. Merchant has started an application for an account with this acquirer, but it is incomplete at this time. • Complete. Merchant has completed an application for an account with this acquirer, and the application is in process at the acquirer. • Terminated. Merchant has applied for an account with this acquirer but the process has been terminated. • Canceled. Merchant has applied for an account with this acquirer, but has subsequently asked that the application process be canceled. • Declined. The acquirer has declined an account for this merchant. • Approved. The acquirer has approved this merchant's application.

Products

The Products syntax specifies the payment products that the merchant uses with the payment network.

```
<Products>
  (Product)+
</Products>
```

Product

The Product syntax identifies a single product associated with the merchant. Products may be associated with billing information and an extended entries field is included for collecting product payment details. Since pricing can change frequently, a pricing structure is not included.

```
<Product Id=?>
  (Name)?
  (Tender)?
  (ExtendedEntries)?
</Product>
```

TABLE 2.11 Product elements

Element	Description
Id	This element is a product identifier understood by the payment network. This value is network specific.
Name	This element is the product name. The product name may be omitted, but it should be included to make the XML document easier to understand by those who set up the documents.
Tender	This element is the method to be used to pay for the product.

TABLE 2.11 Product elements (Continued)

Element	Description
Extended Entries	This element accommodates extended entries for such items as cyclical billing arrangements and other information that can be placed in the ExtendedEntries syntax.

Tender

The Tender syntax includes payment method information to be used for merchant billing purposes. Currently only credit card billing is supported.

```
<Tender>
  (CardType)
  (CardNum)
  (ExpDate)
  (NameOnCard)
  (Address)?
  (Security)?
  (ExtendedEntries)?
</Tender>
```

TABLE 2.12 Tender elements

Element	Description
CardType	This element is the credit card type (such as Mastercard, or Visa).
CardNum	This element is credit card account number.
ExpDate	This element is credit card expiration date in mmyy format.
NameOnCard	This element is the name of the cardholder.
Address	This element is the cardholder's billing address.
Security	This element is Includes additional security feature support for CVV2, 3D Secure (Verified by Visa), SPA, and so on.
Extended Entries	This element can be used to add supplemental information about the credit card and the cardholder.

Users

The Users syntax us for accounts that can access the payment system on behalf of the merchant.

```
<Users>
  (User) +
</Users>
```

User

A user element is given a user name, password, and privileges to access the system.

```
<User>
  (UserName)
  (Password)
  (Role)
  (Contact)
</User>
```

TABLE 2.13 User elements

Element	Description
UserName	This element is the payment network access ID.
Password	This element is the password that the user enters to access the payment network.
Role	This element defines the privileges that the user has within the network. The way in which role information is used within the network is system specific.
Contact	This element is the user's contact information.

Contacts

The Contacts syntax is for a list of people (primary and secondary contacts) who can be contacted about the merchant's account.

```
<Contacts>
  (Contact) +
</Contacts>
```

Contact

The Contact syntax defines information on how to contact an entity referenced in PayPal XMLRegister.

```
<Contact>
  (Rank) +
  (Name)
  (Address)
  (PhoneNo)
  (FaxNo)
  (Email)
</Contact>
```

The Rank element is the importance of this contact. For example, primary or secondary.

ExtendedEntries

The ExtendedEntries syntax specifies a list of name/value pairs.

```
<ExtendedEntries>
  (Entry)+
</ExtendedEntries>
```

Entry

The Entry element is a name/value pair that can be used to represent any arbitrary piece of data.

```
<Entry>
  (Name)
  (Value)
</Entry>
```

Address

The Address element provides the address of the contact.

```
<Address>
  (Street)?
  (City)?
  (State)?
  (Zip)?
  (Country)?
</Address>
```

RequestAuth

The RequestAuth element provides authentication of the requestor through either a user name and password, using UserPass, or a digital signature, using Signature.

```
<RequestAuth>
  (UserPass)
</RequestAuth>
```

UserPass

A Userpass element provides a user password based on authentication information.

```
<UserPass>
  (UserName)
  (UserDomain)
  (Password)
</UserPass>
```

TABLE 2.14 UserPass elements

Element	Description
UserName	This element is a string identifier assigned to a user.
UserDomain	This element names a partner or a vendor under whose auspices a transaction is being submitted.
Password	This element is the user's clear text (unencrypted) password.

PaymentServicesMerchantResponse Document

A response to a registration request is returned from the registration server.

```
<PaymentServicesMerchantResponse>
  <ResponseData>
    (Reseller)
    <RegistrationResults>
      (RegistrationResult)+
    </RegistrationResults>
  </ResponseData>
  (Signature)?
</PaymentServicesMerchantResponse>
```

TABLE 2.15 PaymentServicesMerchantResponse elements

Element	Description
Reseller	This element identifies the user who submitted the transaction on behalf of the vendor.
Registration Result	Refer to “RegistrationResult” on page 25 .
Signature	This element is an optional signature over ResponseData, and is executed by the payment processing gateway using W3C XML Signature syntax. The signature element may be used to provide integrity protection of the response data and/or authentication of the responder. NOTE: Transport-level security may be used to provide these protections rather than utilizing embedded signature verification.

RegistrationResult

The result or response of the registration update includes merchant information and a registration response code.

```
<RegistrationResult Id=?>
  (MerchantId) ?
  (MerchantStatus) ?
  (Result)
  (Message) ?
  (Error) *
</RegistrationResult>
```

TABLE 2.16 *RegistrationResult* elements

Element	Description
MerchantId	This element is the Id of the merchant for which this result corresponds.
Merchant Status	This element indicates the current status of the merchant: test, live, or deactivated.
Result	This element is a number that indicates the outcome of the registration. Refer to Appendix A, “Registration Result Codes.”
Message	This element is a descriptive message describing the result.
Error	This element contains descriptions of each of the errors in the result and can be used for troubleshooting request failures.

3

PayPal XMLRegister Example Documents

This chapter lists the contents of two PayPal XMLRegister documents. The first document is an example of creating a new merchant and the second is an example of updating merchant status.

For information on the syntax used in these examples, see [Chapter 2, “PayPal XMLRegister Syntax.”](#)

Creating a New Merchant Account

The following is an example of an PayPal XMLRegister document for creating a single merchant account using MerchantID to specify the merchant to the payment system.

The new merchant account request syntax includes a number of merchant contacts, merchant identification, a product entry, and a request authorization.

```
<PaymentServicesMerchantRequest Timeout="30">
  <RequestData>
    <Reseller>reseller</Reseller>
    <Registrations>
      <Registration Id="1" Type="New">
        <Merchant>
          <MerchantId>merchantid</MerchantId>
          <ResellerRefId>resellerrefid</ResellerRefId>
          <Password>merchantpassword</Password>
          <Company>
            <Name>Company.com</Name>
            <Address>
              <Street1>1 Comp. Street. 1</Street1>
              <Street2>2 Comp. Street. 2</Street2>
              <City>Company City</City>
              <State>CS</State>
              <Zip>99999</Zip>
              <Country>US</Country>
            </Address>
            <URL>http://www.urlcompnay.com</URL>
            <SICCode></SICCode>
          </Company>
          <Contacts>
            <Contact>
              <Rank>primary</Rank>
              <Name>Primary Contact</Name>
              <Address>
                <Street1>1 Primary. Street st.</Street1>
                <Street2>2 Primary Street st.</Street2>
                <City>Prim City</City>
              </Address>
            </Contact>
          </Contacts>
        </Merchant>
      </Registration>
    </Registrations>
  </RequestData>
</PaymentServicesMerchantRequest>
```

```

        <State>PS</State>
        <Zip>98888</Zip>
        <Country>PC</Country>
    </Address>
    <PhoneNo>650-111-1111</PhoneNo>
    <FaxNo>650-111-1112</FaxNo>
    <Email>primary@email.com</Email>
</Contact>
</Contacts>
</Company>
<Status>Test</Status>
<AcceptedTermsOfUse Type="TryAcctTerms" Revision="2.17"/>
<BaseProductCode>1</BaseProductCode>
<ExtendedEntries>
    <Entry>
        <Name>Notes</Name>
        <Value>note</Value>
    </Entry>
    <Entry>
        <Name>Special Requests</Name>
        <Value>this is a special request from user</Value>
    </Entry>
</ExtendedEntries>
</Merchant>
<Processors>
    <Processor Status="Test">
        <ProcessorId>VITA</ProcessorId>
        <MerchantID>123456789012</MerchantID>
        <AcquirerBIN>123456</AcquirerBIN>
        <CurrencyCode>840</CurrencyCode>
        <SettlementHour>20</SettlementHour>
        <SettlementMinute>00</SettlementMinute>
        <AVSDenyAddress>0</AVSDenyAddress>
        <AVSDenyZip>0</AVSDenyZip>
        <StoreNumber>0000</StoreNumber>
        <TerminalID>0000</TerminalID>
        <CountryCode>840</CountryCode>
        <ZipCode>12345</ZipCode>
        <TimeZone>708</TimeZone>
        <Category>5999</Category>
        <MerchantName>company.com</MerchantName>
        <MerchantPhone>650-111-1111</MerchantPhone>
        <MerchantState>CA</MerchantState>
        <MerchantLocationNumber>00000</MerchantLocationNumber>
        <AgentBin>000000</AgentBin>
        <AgentChainNumber>000000</AgentChainNumber>
        <VNumber>V0000000</VNumber>
    <Acquirer>
        <Name>Aquirers Company Name</Name>
        <Phone>18881111111</Phone>
        <Account>12345</Account>
    </Acquirer>
    </Processor>
</Processors>

```

```

    <Contacts>
      <Contact>
        <Rank>primary</Rank>
        <Name>HELP DESK</Name>
        <Address/>
        <PhoneNo>18881111111</PhoneNo>
        <FaxNo></FaxNo>
        <Email>help@email.com</Email>
      </Contact>
    </Contacts>
    <Status>Approved</Status>
  </Acquirer>
  <SupportedTenders>
    <SupportedTender>
      <TenderType>CreditCard</TenderType>
      <TenderVariety>Visa</TenderVariety>
      <TransactionType>Any</TransactionType>
      <ExtendedEntries/>
    </SupportedTender>
    <SupportedTender>
      <TenderType>CreditCard</TenderType>
      <TenderVariety>MasterCard</TenderVariety>
      <TransactionType>Any</TransactionType>
      <ExtendedEntries/>
    </SupportedTender>
  </SupportedTenders>
  <ExtendedEntries/>
</Processors>
<Products>
  <Product Id="1004">
    <Type>Link</Type>
    <Name>Link</Name>
  </Product>
</Products>
<Tender>
  <CardType>MasterCard</CardType>
  <CardNum>5105105105105100</CardNum>
  <ExpDate>0105</ExpDate>
  <NameOnCard>nameofcard holder</NameOnCard>
  <Address>
    <Street1>1 street</Street1>
    <Street2>Apartment A</Street2>
    <City>Address</City>
    <State>CA</State>
    <Zip>91111</Zip>
    <Country>US</Country>
  </Address>
  <Security>123</Security>
</Tender>
</Registration>

```

```

    </Registrations>
  </RequestData>
</RequestAuth>
  <UserPass>
    <UserName>username</UserName>
    <UserDomain>userdomain</UserDomain>
    <Password>password</Password>
  </UserPass>
</RequestAuth>
</PaymentServicesMerchantRequest>

```

Updating Merchant Status

The following is an example of updating the merchant to a live status. In this example, note that the registration Id type specifies an update to UpdateMerchantStatus and the Status element specifies Live.

```

<?xml version="1.0" encoding="UTF-8"?>
<PaymentServicesMerchantRequest Timeout="60">
  <RequestData>
    <Reseller>reseller</Reseller>
    <Registrations>
      <Registration Id="1234" Type="UpdateMerchantStatus">
        <Merchant>
          <MerchantID>1076295440430</MerchantID>
          <ResellerRefId>reseller</ResellerRefId>
          <Status>Live</Status>
          <ExtendedEntries/>
        </Merchant>
        <Processors>
          <Processor>
            <ProcessorId>NASH</ProcessorId>
            <MerchantID>1234567890</MerchantID>
            <TerminalID>0987654321</TerminalID>
            <MerchantAccount>123456</MerchantAccount>
          <Acquirer>
            <Name>Reseller</Name>
            <Phone>1-800-555-1212</Phone>
            <Account>1234567890</Account>
            <Contacts>
              <Contact>
                <Rank>primary</Rank>
                <Name>Reseller Customer Service</Name>
                <Address/>
                <PhoneNo>1-800-555-1212</PhoneNo>
                <FaxNo></FaxNo>
                <Email>shill@PayPal.com</Email>
              </Contact>
            </Contacts>
          </Acquirer>
        </Processor>
      </Registration>
    </Registrations>
  </RequestData>
</PaymentServicesMerchantRequest>

```

```
</Acquirer>
<SupportedTenders>
  <SupportedTender>
    <TenderType>CreditCard</TenderType>
    <TenderVariety>Visa</TenderVariety>
    <TransactionType>Any</TransactionType>
    <ExtendedEntries/>
  </SupportedTender>
  <SupportedTender>
    <TenderType>CreditCard</TenderType>
    <TenderVariety>MasterCard</TenderVariety>
    <TransactionType>Any</TransactionType>
    <ExtendedEntries/>
  </SupportedTender>
</SupportedTenders>
<ExtendedEntries/>
</Processor>
</Processors>
</Registration>
</Registrations>
</RequestData>
<RequestAuth>
  <UserPass>
    <UserName>reseller</UserName>
    <UserDomain>Reseller</UserDomain>
    <Password>notrealpwd</Password>
  </UserPass>
</RequestAuth>
</PaymentServicesMerchantRequest>
```


A

Registration Result Codes

This appendix lists PayPal XMLRegistration result codes and general code explanations that can be returned from a PayPal XMLRegistration operation. A result greater than 0 indicates that the registration operation has been declined or has generated an error.

TABLE A.1 *Result codes*

Result	Response Explanation
0	Registration Successful.
1	Registration of merchant failed, please check your data and try again later.
2	Registration of merchant timed out, no updates made.
3	Registration service cannot connect to database, please try again later.
4	The role specified for the user is invalid.
5	The maximum number of allowed users has been exceeded.
6	The requested user already exists.
7	Processor does not support requested tender types.
8	Unknown registration type.
9	Unauthorized access to xml registration service attempted.
10	The system does not support agreement term type.
11	The system does not support the registration request type
12	The merchant already exists.
13	The merchant does not exist.
14	The processor cannot be setup correctly, please check your input data.
15	The registration data is invalid.
16	There was an error posting to RMS.
17	An invalid value was given for AcquirerStatus.
18	The Status given for the merchant was invalid.
19	Invalid products passed for reseller.
20	No Contact info was passed.
21	The system does not support contact type: <contact type>

TABLE A.1 *Result codes (Continued)*

Result	Response Explanation
22	You must have valid processor information to successfully complete this request.
23	Missing or incomplete information for account billing.
24	Maximum number of registrations exceeded. Max is 32.

B

Required Processor Data Examples

This appendix lists examples of the request data that must be included for each supported processor.

- American Express APAC (AMXA)
- American Express Phoenix (AMEX)
- Elavon (formerly NOVA)
- First Data Merchant Services Nashville (NASH)
- First Data Merchant Services North (NORT)
- First Data Merchant Services South (SOUT)
- First Data TeleCheck (TELN)
- Global Payment Central (MAPP)
- Global Payments East (NDCE)
- Heartland Payment Systems (HTLD)
- Litle (LITL)
- Merchant e-Solutions (MESP)
- Moneris (MONE)
- Paymentech Salem (New Hampshire) (PAYT)
- Paymentech Tampa (TMPA)
- PayPal Australia (FDRA)
- SecureNet (SNET)
- TSYS Acquiring Solutions (formerly Vital) (VITA)
- Vantiv (formerly Fifth Third Processing Solutions) (FIFT)
- WorldPay (WPAY)

American Express APAC (AMXA)

```
<Processors>
  <Processor Status="Live">
    <ProcessorId>AMXA</ProcessorId>
    <Acquirer>
      <Name>acquirername</Name>
      <Phone>123-123-1234</Phone>
      <Account>123-1111-11</Account>
    </Acquirer>
  </Processor>
</Processors>
```

```

    <Contacts>
      <Contact>
        <Rank>primary</Rank>
        <Name>John Smith</Name>
        <Address>
          <Street1>111 street</Street1>
          <Street2></Street2>
          <City>city</City>
          <State>SA</State>
          <Zip>11111</Zip>
          <Country>AU</Country>
        </Address>
        <PhoneNo>111-111-1111</PhoneNo>
        <FaxNo>111-111-1111</FaxNo>
        <Email>aquireremail@email.com</Email>
      </Contact>
    </Contacts>
  </Acquirer>
  <AmexTerminalID>22334432</AmexTerminalID>
  <SIC>4321</SIC>
  <CountryCode>036</CountryCode>
  <EstablishmentName>EstablishmentName</EstablishmentName>
  <EstablishmentCity>EstablishmentCity</EstablishmentCity>
  <EstablishmentState>SA</EstablishmentState>
  <Zip>95131</Zip>
  <MerchantAccount>1233456</MerchantAccount>
  <SupportedTenders>
    <SupportedTender>
      <TenderType>Any</TenderType>
      <TenderVariety>Any</TenderVariety>
      <TransactionType>Any</TransactionType>
    </SupportedTender>
  </SupportedTenders>
</Processor>
</Processors>

```

American Express Phoenix (AMEX)

```

<Processors>
  <Processor Status="Test">
    <ProcessorId>AMEX</ProcessorId>
    <Acquirer>
      <Name>aquirername</Name>
      <Phone>123-123-1234</Phone>
      <Account>123-1111-11</Account>
      <Contacts>
        <Contact>
          <Rank>primary</Rank>
          <Name>John Smith</Name>

```

```

        <Address>
            <Street1>111 street</Street1>
            <Street2></Street2>
            <City>Mountain View</City>
            <State>CA</State>
            <Zip>11111</Zip>
            <Country>US</Country>
        </Address>
        <PhoneNo>111-111-1111</PhoneNo>
        <FaxNo>111-111-1111</FaxNo>
        <Email>aquireremail@email.com</Email>
    </Contact>
</Contacts>
</Acquirer>
<Acquirer></Acquirer>
<MerchantID>000000000000</MerchantID>
<AmexTerminalID>000000000000</AmexTerminalID>
<MerchantAccount>0000000</MerchantAccount>
<AcquirerBIN>0000</AcquirerBIN>
<SupportedTenders>
    <SupportedTender>
        <TenderType>Any</TenderType>
        <TenderVariety>Any</TenderVariety>
        <TransactionType>Any</TransactionType>
    </SupportedTender>
</SupportedTenders>
</Processor>
</Processors>

```

Elavon (formerly NOVA)

```

<Processors>
    <Processor Status="Live">
        <ProcessorId>NOVA</ProcessorId>
        <Acquirer>
            <Name>aquirer name</Name>
            <Phone>111-111-1111</Phone>
            <Account>000-000000</Account>
            <Contacts>
                <Contact>
                    <Rank>primary</Rank>
                    <Name>John Smith</Name>
                    <Address>
                        <Street1>111 street</Street1>
                        <Street2></Street2>
                        <City>Palo Alto</City>
                        <State>CA</State>
                        <Zip>91111</Zip>
                        <Country>US</Country>
                    </Address>
                    <PhoneNo>111-111-1111</PhoneNo>
                </Contact>
            </Contacts>
        </Acquirer>
    </Processor>
</Processors>

```

Required Processor Data Examples

First Data Merchant Services Nashville (NASH)

```

        <FaxNo>111-111-1111</FaxNo>
        <Email>aquireremail@email.com</Email>
    </Contact>
</Contacts>
</Acquirer>
<MerchantAccount>1234567890</MerchantAccount>
<TerminalID>000000000</TerminalID>
<AcquirerBIN>000000</AcquirerBIN>
<MerchantID>000000000</MerchantID>
<SupportedTenders>
    <SupportedTender>
        <TenderType>Any</TenderType>
        <TenderVariety>Any</TenderVariety>
        <TransactionType>Any</TransactionType>
    </SupportedTender>
</SupportedTenders>
</Processor>
</Processors>

```

First Data Merchant Services Nashville (NASH)

```

<Processors>
    <Processor Status="Test">
        <ProcessorId>NASH</ProcessorId>
        <Acquirer>
            <Name>aquirer name</Name>
            <Phone>111-111-1111</Phone>
            <Account>000-000000</Account>
            <Contacts>
                <Contact>
                    <Rank>primary</Rank>
                    <Name>John Smith</Name>
                    <Address>
                        <Street1>111 street</Street1>
                        <Street2></Street2>
                        <City>Palo Alto</City>
                        <State>CA</State>
                        <Zip>91111</Zip>
                        <Country>US</Country>
                    </Address>
                    <PhoneNo>111-111-1111</PhoneNo>
                    <FaxNo>111-111-1111</FaxNo>
                    <Email>aquireremail@email.com</Email>
                </Contact>
            </Contacts>
        </Acquirer>
        <MerchantID>0000000</MerchantID>
        <TerminalID>0000000</TerminalID>
    </Processor>
</Processors>

```

```

<MerchantAccount>123456789</MerchantAccount>
<AcquirerBIN>1234</AcquirerBIN>
<SupportedTenders>
  <SupportedTender>
    <TenderType>Any</TenderType>
    <TenderVariety>Any</TenderVariety>
    <TransactionType>Any</TransactionType>
  </SupportedTender>
</SupportedTenders>
</Processor>
</Processors>

```

First Data Merchant Services North (NORT)

```

<Processors>
<Processor Status="Live">
  <ProcessorId>NORT</ProcessorId>

  <Acquirer>
    <Name>Acquirer</Name>
    <Phone>123-123-1234</Phone>
    <Account>123-1111-11</Account>
    <Contacts>
      <Contact>
        <Rank>primary</Rank>
        <Name>John Smith</Name>
        <Address>
          <Street1>111 street</Street1>
          <Street2></Street2>
          <City>Mountain View</City>
          <State>CA</State>
          <Zip>11111</Zip>
          <Country>US</Country>
        </Address>
        <PhoneNo>111-111-1111</PhoneNo>
        <FaxNo>111-111-1111</FaxNo>
        <Email>aquireremail@email.com</Email>
      </Contact>
    </Contacts>
  </Acquirer>
  <TerminalID>2744645</TerminalID>
  <MerchantID>78123476345</MerchantID>
  <SIC>4321</SIC>
  <SupportedTenders>
    <SupportedTender>
      <TenderType>Any</TenderType>
      <TenderVariety>Any</TenderVariety>
      <TransactionType>Any</TransactionType>
    </SupportedTender>
  </SupportedTenders>

```

```

    </SupportedTenders>

</Processor>
</Processors>

```

First Data Merchant Services South (SOUT)

For the First Data Merchant Services South Processor, the only BPS or CHASE can be used as a valid Acquirer Name. For example:

```

<Acquirer>
  <Name>BPS</Name>
  <Phone>123-123-1234</Phone>
  <Account>123456789</Account>
  <Contacts>
    <Contact>
      <Rank>primary</Rank>
      <Name>John Doe</Name>
      <Address>
        <Street1>123 Street ST</Street1>
        <Street2>Apartment 301</Street2>
        <City>City</City>
        <State>CA</State>
        <Zip>91111</Zip>
        <Country>US</Country>
      </Address>
    </Contact>

```

Following is an example of the request data:

```

<Processors>
  <Processor Status="Test">
    <ProcessorId>SOUT</ProcessorId>
    <Acquirer>
      <Name>acquirer name</Name>
      <Phone>111-111-1111</Phone>
      <Account>000-000000</Account>
      <Contacts>
        <Contact>
          <Rank>primary</Rank>
          <Name>John Smith</Name>
          <Address>
            <Street1>111 street</Street1>
            <Street2></Street2>
            <City>Palo Alto</City>
            <State>CA</State>
            <Zip>91111</Zip>
            <Country>US</Country>
          </Address>
          <PhoneNo>111-111-1111</PhoneNo>

```



```

        <FaxNo>111-111-1111</FaxNo>
        <Email>aquireremail@email.com</Email>
    </Contact>
</Contacts>
</Acquirer>
<State>CA</State>
<MerchantAccount>1234567890</MerchantAccount>
<Zip>12345</Zip>
<SIC>1234</SIC>
<MerchantID>000000000</MerchantID>
<SupportedTenders>
    <SupportedTender>
        <TenderType>Any</TenderType>
        <TenderVariety>Any</TenderVariety>
        <TransactionType>Any</TransactionType>
    </SupportedTender>
</SupportedTenders>
</Processor>
</Processors>

```

First Data TeleCheck (TELN)

```

<Processors>
    <Processor Status="Live">
        <ProcessorId>TELN</ProcessorId>
        <CurrencyCode>840</CurrencyCode>
        <IPCode>1234</IPCode>
        <TerminalID>1534243</TerminalID>
        <SupportedTenders>
            <SupportedTender>
                <TenderType>Any</TenderType>
                <TenderVariety>Any</TenderVariety>
                <TransactionType>Any</TransactionType>
            </SupportedTender>
        </SupportedTenders>
    </Processor>
</Processors>

```

Global Payment Central (MAPP)

```

<Processors>
    <Processor Status="Live">
        <ProcessorId>MAPP</ProcessorId>
        <Acquirer>
            <Name>aquirer name</Name>

```

```

    <Phone>111-111-1111</Phone>
    <Account>000-000000</Account>
    <Contacts>
      <Contact>
        <Rank>primary</Rank>
        <Name>John Smith</Name>
        <Address>
          <Street1>111 street</Street1>
          <Street2></Street2>
          <City>Palo Alto</City>
          <State>CA</State>
          <Zip>91111</Zip>
          <Country>US</Country>
        </Address>
        <PhoneNo>111-111-1111</PhoneNo>
        <FaxNo>111-111-1111</FaxNo>
        <Email>aquireremail@email.com</Email>
      </Contact>
    </Contacts>
  </Acquirer>
  <MerchantAccount>1234567890</MerchantAccount>
  <TerminalID>000000000</TerminalID>
  <MerchantID>00000000</MerchantID>
  <SupportedTenders>
    <SupportedTender>
      <TenderType>Any</TenderType>
      <TenderVariety>Any</TenderVariety>
      <TransactionType>Any</TransactionType>
    </SupportedTender>
  </SupportedTenders>
</Processor>
</Processors>

```

Global Payments East (NDCE)

```

<Processors>
  <Processor Status="Live">
    <ProcessorId>NDCE</ProcessorId>
    <Acquirer>
      <Name>aquirer name</Name>
      <Phone>111-111-1111</Phone>
      <Account>000-000000</Account>
      <Contacts>
        <Contact>
          <Rank>primary</Rank>
          <Name>John Smith</Name>
          <Address>

```

```

        <Street1>111 street</Street1>
        <Street2></Street2>
        <City>Palo Alto</City>
        <State>CA</State>
        <Zip>91111</Zip>
        <Country>US</Country>
    </Address>
    <PhoneNo>111-111-1111</PhoneNo>
    <FaxNo>111-111-1111</FaxNo>
    <Email>aquireremail@email.com</Email>
</Contact>
</Contacts>
</Acquirer>
<BankID>000000</BankID>
<MerchantAccount>1234567890</MerchantAccount>
<Category>0000</Category>
<TerminalID>123456789</TerminalID>
<SupportedTenders>
    SupportedTender>
        <TenderType>Any</TenderType>
        <TenderVariety>Any</TenderVariety>
        <TransactionType>Any</TransactionType>
    </SupportedTender>
</SupportedTenders>
</Processor>
</Processors>

```

Heartland Payment Systems (HTLD)

```

<Processors>
    <Processor Status="Live">
        <ProcessorId>HTLD</ProcessorId>
        <MerchantName>Test</MerchantName>
        <MerchantCity>1234</MerchantCity>
        <MerchantPhone>123-123-1234</MerchantPhone>
        <MerchantState>CA</MerchantState>
        <MerchantID>40897678784</MerchantID>
        <V-Number>1233</V-Number>
        <Industry>E</Industry>
        <AcquirerBIN>123123</AcquirerBIN>
        <StoreNumber>1234</StoreNumber>
        <TerminalNumber>1534</TerminalNumber>
        <AgentChainNumber>4312</AgentChainNumber>
        <AgentBankNumber>4312</AgentBankNumber>
        <CurrencyCode>840</CurrencyCode>
        <CountryCode>US</CountryCode>
        <MerchantCityCode>95112</MerchantCityCode>
        <MerchantCategoryCode>9512</MerchantCategoryCode>
    </Processor>
</Processors>

```

```

    <TimeZone>GMT</TimeZone>
    <MerchantLocationNumber>3456</MerchantLocationNumber>
    <AcquirerContactPhone>1234</AcquirerContactPhone>
    <SupportedTenders>
      <SupportedTender>
        <TenderType>Any</TenderType>
        <TenderVariety>Any</TenderVariety>
        <TransactionType>Any</TransactionType>
      </SupportedTender>
    </SupportedTenders>
  </Processor>
</Processors>

```

Litle (LITL)

```

<Processors>
  <Processor Status="Live">
    <ProcessorId>LITL</ProcessorId>
    <MerchantID>7465</MerchantID>
    <Industry>E</Industry>
    <CurrencyCode>840</CurrencyCode>
    <SupportedTenders>
      <SupportedTender>
        <TenderType>Any</TenderType>
        <TenderVariety>Visa</TenderVariety>
        <TransactionType>Any</TransactionType>
      </SupportedTender>
      <SupportedTender>
        <TenderType>Any</TenderType>
        <TenderVariety>MasterCard</TenderVariety>
        <TransactionType>Any</TransactionType>
      </SupportedTender>
    </SupportedTenders>
  </Processor>
</Processors>

```

Merchant e-Solutions (MESP)

```

<Processors>
  <Processor Status="Live">
    <ProcessorId>MESP</ProcessorId>
    <Acquirer>

```

```

<Name>Westpac</Name>
<Phone>+61 7 3378 3214</Phone>
<Account>789-2133-45</Account>
<Contacts>
  <Contact>
    <Rank>primary</Rank>
    <Name>John Smith</Name>
    <Address>
      <Street1>345 Forest Ave</Street1>
      <Street2>Apartment 301</Street2>
      <City>Palo Alto</City>
      <State>CA</State>
      <Zip>94301</Zip>
      <Country>US</Country>
    </Address>
    <PhoneNo>+61 7 3378 3214</PhoneNo>
    <FaxNo>+61 7 3378 3378</FaxNo>
    <Email>johndamiensmith@hotmail.com</Email>
  </Contact>
</Contacts>
</Acquirer>
<Acquirer></Acquirer>
<MerchantID>000470088888</MerchantID>
<TerminalID>1234</TerminalID>
<SettlementHour>12</SettlementHour>
<SettlementMinute>12</SettlementMinute>
<StoreNumber>0001</StoreNumber>
<MerchantAccount>3423423</MerchantAccount>
<AcquirerBIN>8876</AcquirerBIN>
<CountryCode>840</CountryCode>
<ZipCode>94086</ZipCode>
<TimeZone>790</TimeZone>
<MerchantName>Test</MerchantName>
<MerchantPhone>650-622-2200</MerchantPhone>
<MerchantState>CA</MerchantState>
<MerchantLocationNumber>00001</MerchantLocationNumber>
<AgentBin>000000</AgentBin>
<AgentChainNumber>000000</AgentChainNumber>
<VNumber>V1111111</VNumber>
<BankID>123456</BankID>
<Settlement>Settlement info would go here</Settlement>
<TransactionChecks>Trxn checking info will go here</TransactionChecks>
<SupportedTenders>
  <SupportedTender>
    <TenderType>Any</TenderType>
    <TenderVariety>Any</TenderVariety>
    <TransactionType>Anipy</TransactionType>
    <ExtendedEntries>
      <Entry>
        <Name>Additional constraints</Name>
        <Value>Supports only Westpac issued Mastercards</Value>
      </Entry>
    </ExtendedEntries>
  </SupportedTender>
</SupportedTenders>

```

```

        </Entry>
      </ExtendedEntries>
    </SupportedTender>
  </SupportedTenders>
<ExtendedEntries>
  <Entry>
    <Name>Special processing orders</Name>
    <Value>Use sub-etha transport layer from Sirius Cybernetics
Corporation</Value>
  </Entry>
</ExtendedEntries>
</Processor>
</Processors>

```

Moneris (MONE)

```

<Processors>
  <Processor Status="Live">
    <ProcessorId>MONE</ProcessorId>
    <CurrencyCode>124</CurrencyCode>
    <Acquirer>
      <Name>Westpac</Name>
      <Phone>111-111-1111</Phone>
      <Account>000-0000-00</Account>
      <Contacts>
        <Contact>
          <Rank>primary</Rank>
          <Name>John Smith</Name>
          <Address>
            <Street1>111 Ave</Street1>
            <Street2>Apartment 301</Street2>
            <City>Toronto</City>
            <State>ON</State>
            <Zip>M5A 1E1</Zip>
            <Country>CA</Country>
          </Address>
          <PhoneNo>111-111-1111</PhoneNo>
          <FaxNo>111-111-1111</FaxNo>
          <Email>aquireremail@email.com</Email>
        </Contact>
      </Contacts>
    </Acquirer>
    <MerchantID>3457896511278</MerchantID>
    <TerminalID>96341567</TerminalID>
    <MerchantAccount>3423423</MerchantAccount>
    <SupportedTenders>
      <SupportedTender>
        <TenderType>Any</TenderType>
        <TenderVariety>Any</TenderVariety>
      </SupportedTender>
    </SupportedTenders>
  </Processor>
</Processors>

```

```

        <TransactionType>Any</TransactionType>
    </SupportedTender>
</SupportedTenders>
</Processor>
</Processors>
    
```

Paymentech Salem (New Hampshire) (PAYT)

```

<Processors>
  <Processor Status="Live">
    <ProcessorId>PAYT</ProcessorId>
    <Acquirer>
      <Name>aquirer name</Name>
      <Phone>111-111-1111</Phone>
      <Account>000-000000</Account>
      <Contacts>
        <Contact>
          <Rank>primary</Rank>
          <Name>John Smith</Name>
          <Address>
            <Street1>111 street</Street1>
            <Street2></Street2>
            <City>Palo Alto</City>
            <State>CA</State>
            <Zip>91111</Zip>
            <Country>US</Country>
          </Address>
          <PhoneNo>111-111-1111</PhoneNo>
          <FaxNo>111-111-1111</FaxNo>
          <Email>aquireremail@email.com</Email>
        </Contact>
      </Contacts>
    </Acquirer>
    <MerchantAccount>1234567890</MerchantAccount>
    <DivisionNumber>000000</DivisionNumber>
    <SupportedTenders>
      <SupportedTender>
        <TenderType>Any</TenderType>
        <TenderVariety>Any</TenderVariety>
        <TransactionType>Any</TransactionType>
      </SupportedTender>
    </SupportedTenders>
  </Processor>
</Processors>
    
```

Paymentech Tampa (TMPA)

```

<Processors>
  <Processor Status="Live">
    <ProcessorId>TMPA</ProcessorId>
    <Acquirer>
      <Name>Westpac</Name>
      <Phone>1-337-321-4444</Phone>
      <Account>789-2133-45</Account>
      <Contacts>
        <Contact>
          <Rank>primary</Rank>
          <Name>John Smith</Name>
          <Address>
            <Street1>345 Forest Ave</Street1>
            <Street2>Apartment 301</Street2>
            <City>Toronto</City>
            <State>ON</State>
            <Zip>M5A 1E1</Zip>
            <Country>CA</Country>
          </Address>
          <PhoneNo>+1-337-321-1114</PhoneNo>
          <FaxNo>+1-337-423-3378</FaxNo>
          <Email>johndamiensmith@hotmail.com</Email>
        </Contact>
      </Contacts>
    </Acquirer>
    <TerminalID>123</TerminalID>
    <SIC>1122</SIC>
    <MerchantID>11223344</MerchantID>
    <SupportedTenders>
      <SupportedTender>
        <TenderType>Any</TenderType>
        <TenderVariety>Any</TenderVariety>
        <TransactionType>Any</TransactionType>
      </SupportedTender>
    </SupportedTenders>
  </Processor>
</Processors>

```

PayPal Australia (FDRA)

Mail Order Telephone Order (MOTO) is supported for the FDRA processor only. To set a merchant's processor to FDRA, add the following to the <Processor> block:

```
<MarketSegment>D</MarketSegment>
```

Following is an example of the request data:


```

<Processors>
  <Processor Status="Live">
    <ProcessorId>FDRA</ProcessorId>
    <Acquirer>
      <Name>aquirer name</Name>
      <Phone>111-111-1111</Phone>
      <Account>000-000000</Account>
      <Contacts>
        <Contact>
          <Rank>primary</Rank>
          <Name>John Smith</Name>
          <Address>
            <Street1>111 street</Street1>
            <Street2></Street2>
            <City>Palo Alto</City>
            <State>CA</State>
            <Zip>91111</Zip>
            <Country>US</Country>
          </Address>
          <PhoneNo>111-111-1111</PhoneNo>
          <FaxNo>111-111-1111</FaxNo>
          < Email>aquireremail@email.com</Email>
        </Contact>
      </Contacts>
    </Acquirer>
    <MerchantType>111</MerchantType>
    <MerchantCity>mycity</MerchantCity>
    <MerchantAddress>123 city St.</MerchantAddress>
    <MerchantCountry>US</MerchantCountry>
    <MerchantName>John Doe</MerchantName>
    <MerchantAccount>1234567890</MerchantAccount>
    <TerminalID>00000000</TerminalID>
    <MerchantPostalCode>12345</MerchantPostalCode>
    <MerchantID>00000000</MerchantID>
    <SupportedTenders>
      <SupportedTender>
        <TenderType>Any</TenderType>
        <TenderVariety>Any</TenderVariety>
        <TransactionType>Any</TransactionType>
      </SupportedTender>
    </SupportedTenders>
  </Processor>
</Processors>

```

SecureNet (SNET)

```

<Processors>

```

```

<Processor Status="Live">
  <ProcessorId>SNET</ProcessorId>
  <Industry>E</Industry>
  <CurrencyCode>840</CurrencyCode>
  <MerchantName>Test</MerchantName>
  <MerchantNumber>75876</MerchantNumber>
  <V-Number>4467</V-Number>
  <TerminalNumber>3545</TerminalNumber>
  <StoreNumber>5366</StoreNumber>
  <MerchantPhone>123-123-1234</MerchantPhone>
  <MerchantCityCode>565678</MerchantCityCode>
  <MerchantState>CA</MerchantState>
  <LocationNumber>56463</LocationNumber>
  <CountryCode>US</CountryCode>
  <TimeZone>GTM</TimeZone>
  <CategoryCode>8657</CategoryCode>
  <AgentNumber>687678</AgentNumber>
  <ChainNumber>65665</ChainNumber>
  <BinNumber>67868</BinNumber>
  <CustomerServiceNumber>7987987</CustomerServiceNumber>
  <MerchantAccount>568689</MerchantAccount>
  <SupportedTenders>
    <SupportedTender>
      <TenderType>Any</TenderType>
      <TenderVariety>Any</TenderVariety>
      <TransactionType>Any</TransactionType>
    </SupportedTender>
  </SupportedTenders>
</Processor>
</Processors>

```

TSYS Acquiring Solutions (formerly Vital) (VITA)

```

<Processors>
  <Processor Status="Live">
    <Acquirer>
      <Name>aquirer name</Name>
      <Phone>111-111-1111</Phone>
      <Account>000-000000</Account>
      <Contacts>
        <Contact>
          <Rank>primary</Rank>
          <Name>John Smith</Name>
          <Address>
            <Street1>111 street</Street1>
            <Street2></Street2>
            <City>Palo Alto</City>
          </Address>
        </Contact>
      </Contacts>
    </Acquirer>
  </Processor>
</Processors>

```

```

        <State>CA</State>
        <Zip>91111</Zip>
        <Country>US</Country>
    </Address>
    <PhoneNo>111-111-1111</PhoneNo>
    <FaxNo>111-111-1111</FaxNo>
    <Email>aquireremail@email.com</Email>
</Contact>
</Contacts>
</Acquirer>
<ProcessorId>VITA</ProcessorId>
<MerchantID>123456789012</MerchantID>
<AcquirerBIN>449279</AcquirerBIN>
<CurrencyCode>840</CurrencyCode>
<SettlementHour>20</SettlementHour>
<SettlementMinute>00</SettlementMinute>
<AVSDenyAddress>0</AVSDenyAddress>
<AVSDenyZip>0</AVSDenyZip>
<StoreNumber>0001</StoreNumber>
<TerminalID>0001</TerminalID>
<CountryCode>840</CountryCode>
<ZipCode>12345</ZipCode>
<TimeZone>708</TimeZone>
<Category>5999</Category>
<MerchantName>Stmpjmpr.com</MerchantName>
<MerchantPhone>650-426-5413</MerchantPhone>
<MerchantState>CA</MerchantState>
<MerchantLocationNumber>00001</MerchantLocationNumber>
<AgentBin>000000</AgentBin>
<AgentChainNumber>000000</AgentChainNumber>
<VNumber>V5305865</VNumber>
    <SupportedTenders>
        <SupportedTender>
            <TenderType>CreditCard</TenderType>
            <TenderVariety>Visa</TenderVariety>
            <TransactionType>Any</TransactionType>
        </SupportedTender>
        <SupportedTender>
            <TenderType>CreditCard</TenderType>
            <TenderVariety>MasterCard</TenderVariety>
            <TransactionType>Any</TransactionType>
        </SupportedTender>
    </SupportedTenders>
</Processor>
</Processors>

```

Vantiv (formerly Fifth Third Processing Solutions) (FIFT)


```

<Processors>
  <Processor Status="Live">
    <ProcessorId>FIFT</ProcessorId>
    <MerchantName>TestMerchant</MerchantName>
    <Street>First Street</Street>
    <City>San Jose</City>
    <State>CA</State>
    <Zip>95131</Zip>
    <Phone>123-123-1234</Phone>
    <MerchantID>123456789012</MerchantID>
    <TerminalID>D7412000401</TerminalID>
    <MerchantCategory>E</MerchantCategory>
    <BinNumber>012345678912</BinNumber>
    <MerchantCategoryCode>5999</MerchantCategoryCode>
    <ChainCode>599999</ChainCode>
    <CurrencyCode>840</CurrencyCode>
    <SupportedTenders>
      <SupportedTender>
        <TenderType>Any</TenderType>
        <TenderVariety>Visa</TenderVariety>
        <TransactionType>Any</TransactionType>
      </SupportedTender>
      <SupportedTender>
        <TenderType>Any</TenderType>
        <TenderVariety>MasterCard</TenderVariety>
        <TransactionType>Any</TransactionType>
      </SupportedTender>
      <SupportedTender>
        <TenderType>Any</TenderType>
        <TenderVariety>Discover</TenderVariety>
        <TransactionType>Any</TransactionType>
      </SupportedTender>
      <SupportedTender>
        <TenderType>Any</TenderType>
        <TenderVariety>AmericanExpress</TenderVariety>
        <TransactionType>Any</TransactionType>
      </SupportedTender>
    </SupportedTenders>
  </Processor>
</Processors>


```

WorldPay (WPAY)

```
<Processors>
  <Processor Status="Live">
    <ProcessorId>WPAY</ProcessorId>
    <TerminalID>174120</TerminalID>
    <CheckDigit>0</CheckDigit>
    <MerchantID>123456789012</MerchantID>
    <MerchantName>TestMerchant</MerchantName>
    <Street>First Street</Street>
    <City>San Jose</City>
    <State>CA</State>
    <Zip>95131</Zip>
    <CountryCode>840</CountryCode>
    <Phone>123-123-1234</Phone>
    <EmailAddress>test@paypal.com</EmailAddress>
    <MerchantCategory>E</MerchantCategory>
    <CurrencyCode>840</CurrencyCode>
    <MerchantCategoryCode>5999</MerchantCategoryCode>
    <SupportedTenders>
      <SupportedTender>
        <TenderType>Any</TenderType>
        <TenderVariety>Visa</TenderVariety>
        <TransactionType>Any</TransactionType>
      </SupportedTender>
      <SupportedTender>
        <TenderType>Any</TenderType>
        <TenderVariety>MasterCard</TenderVariety>
        <TransactionType>Any</TransactionType>
      </SupportedTender>
      <SupportedTender>
        <TenderType>Any</TenderType>
        <TenderVariety>Discover</TenderVariety>
        <TransactionType>Any</TransactionType>
      </SupportedTender>
      <SupportedTender>
        <TenderType>Any</TenderType>
        <TenderVariety>AmericanExpress</TenderVariety>
        <TransactionType>Any</TransactionType>
      </SupportedTender>
    </SupportedTenders>
  </Processor>
</Processors>
```

A
Acquirer 19
 Status 20
Acquirer elements
 Account 19
Address 23
B
batch processing 11, 12
C
Company 15
 Address 15
 Contacts 15
 Name 15
 URL 15
E
Elavon 16
ExtendedEntries 23
M
Mail Order Telephone Order (MOTO) 48
Merchant 14
 Accepted TermsOfUse 15
 Extended Entries 15
 MerchantId 14
 Password 14
 ResellerRefId 14
 Status 15
merchant status
 deactivate 7
 reactivate 7
 register 7
 update 7
N
Nova 16
P
PaymentServicesMerchantRequest
 Registration 12
 RequestAuth 12
 Reseller 12
 Timeout 12
PaymentServicesMerchantRequest Document 12
PaymentServicesMerchantResponse Document 24
 Registration Result 24
 Reseller 24



Signature 24
PayPal Customer Support 17
Processor 16
 Acquirer 17
 Currency Code 17
 Extended Entries 17
 MerchantId 17
 Name 17
 Settlement 17
 Status 17
 Supported Tenders 17
 TerminalId 17
 Transaction Checks 17
Processors
 American Express APAC 16, 35
 American Express Phoenix 16, 36
 Elavon 16, 37
 Fifth Third Processing Solutions 16
 First Data International 16
 First Data Merchant Services Nashville 16, 38
 First Data Merchant Services North 16, 39
 First Data Merchant Services South 16, 40
 First Data TeleCheck 16, 41
 Global Payment Central 16, 41
 Global Payments East 16, 42
 Heartland Payment Systems 16, 43
 Litle 16, 44
 Merchant e-Solutions 16, 44
 Moneris 16, 46
 Nova Information Systems 37
 Paymentech Salem (New Hampshire) 16, 47
 Paymentech Tampa 16, 48
 PayPal Australia 16, 48
 SecureNet 16, 49
 TSYS Acquiring Solutions 16, 50
 Vantiv 16, 52
 Vital 16
 WorldPay 16, 52
Product
 Extended Entries 21
 Id 20
 Name 20

R

Registration 13

- Id 13

- Products 13

- Type 13

requests

- batch 8, 11

- failures 25

- merchant registration 12

- new merchant 27

- response 24

- updating merchants 30

S

SupportedTenders

- ExtendedEntries 19

- Processor 16

- TenderType 19

- TenderVariety 19

- TransactionType 19

syntax notation 11

T

Tender

- Address 21

- CardNum 21

- CardType 21

- ExpDate 21

- ExtendedEntries 21

- NameOnCard 21

- Security 21

TransactionChecks

- AvsCheck Address 18

- AvsCheckZip 18

- CSCCheck 18

U

User

- Contact 22

- Password 22

- Role 22

- UserName 22

UserPass

- Password 24

- UserDomain 24

- UserName 24

